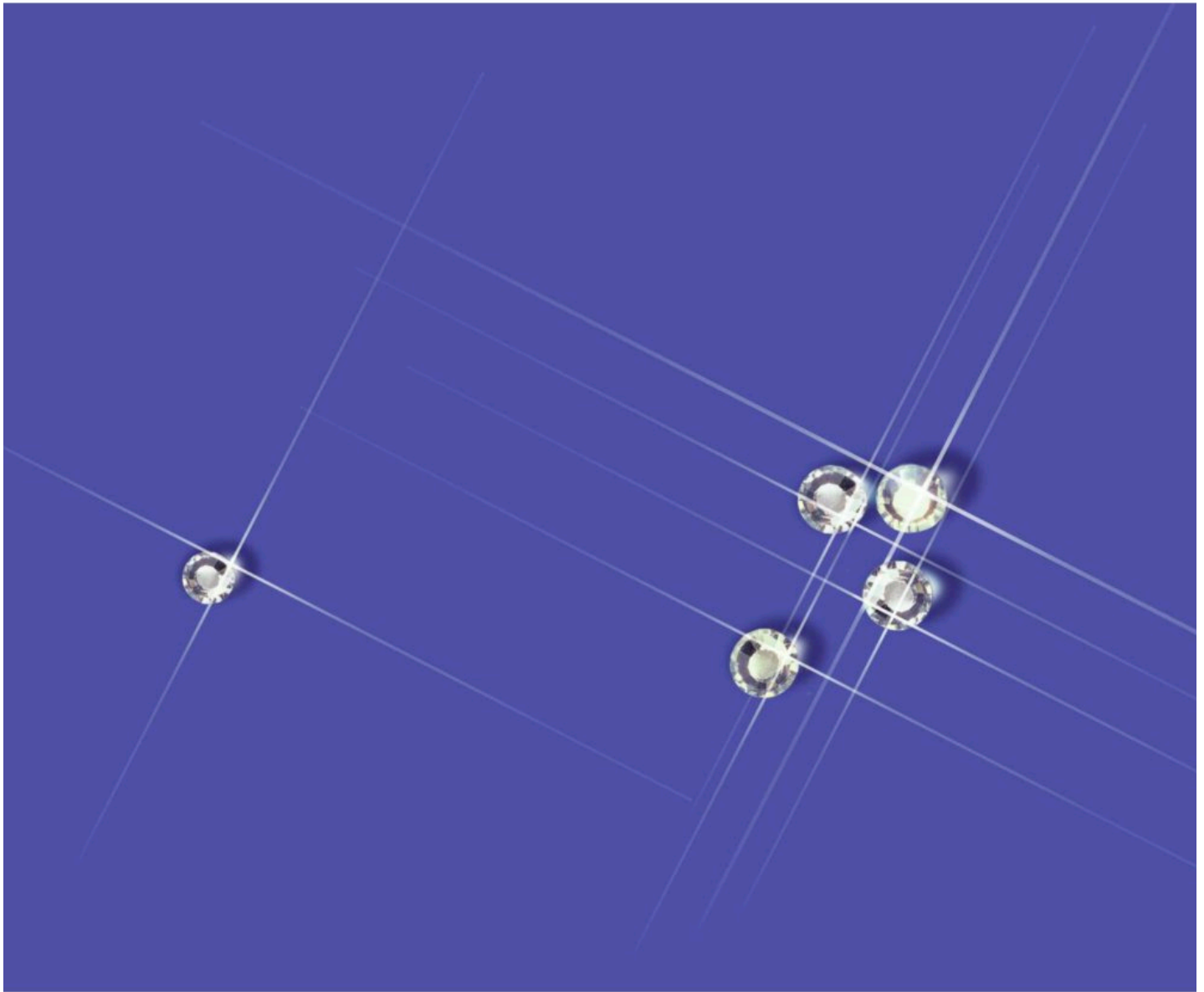


Diamonds are forever, Skyce® is just for fun.



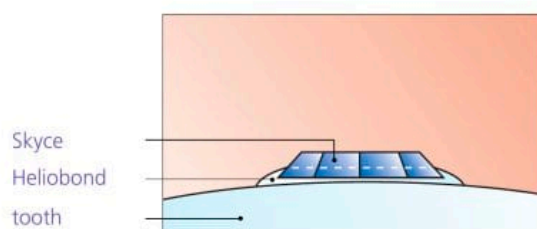
Dazzling: Skyce® from Ivoclar Vivadent

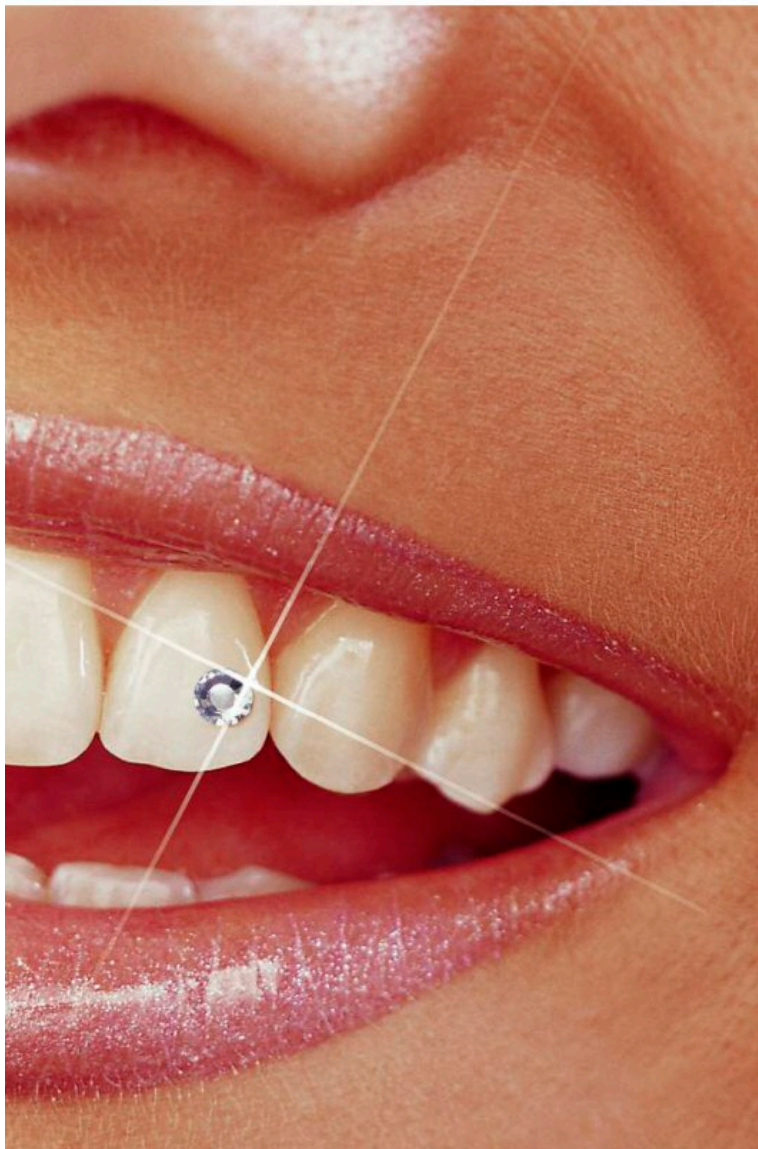
Cosmetic procedures; medical expertise

Dentists of today are finding that more and more people who consult them are no longer really patients. They are individuals who desire perfectly aligned, sparkling white teeth, and who may even ask for tooth jewellery. These cosmetic procedures have to be accomplished by professionals with professional products. Vivadent has developed the Skyce system of tooth jewellery, which enables dentists to satisfy this cosmetic demand according to dental requirements.

Stunning jewellery; healthy teeth

Patients want a sparkling smile; dentists want teeth to be healthy. Dentists are committed to maintaining the health of teeth at all costs. Vivadent has developed Skyce in such a way that dentists can carry out the procedure responsibly using tried-and-tested products. The dental jewellery does not need to be pre-treated and is bonded onto the tooth in the same way as an orthodontic bracket.





Two ornaments; three bonding steps

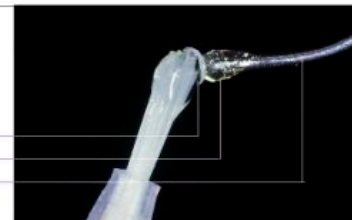
The Skyce Intro Pack contains ten jewels in two different sizes as well as all the components for bonding. The three most important steps in the practice are shown below:

Etch dental enamel with phosphoric acid



Apply Heliobond on Skyce

Skyce
Vivastick adhesive material
Probe



Light cure from all sides



The shining result



Slight etching; strong bond

Skyce is easy to apply. First, a retentive pattern is produced on the enamel using 37% phosphoric acid. Then, Skyce is bonded to the tooth with the transparent, flowable Heliobond.

In the process, Heliobond penetrates into the retention niches on the back of Skyce and into the etch pattern on the tooth.

Skyce must be encircled by a little Heliobond to ensure macromechanical retention.

One colour; two sizes

Skyce is made of crystal glass. It is available in the colour "crystal" in two different sizes: 1.9 mm or 2.4 mm in diameter.



Skyce®

Delivery forms

Intro Pack

- 1 x Total Etch 2g
- 1 x Heliobond 6g
- 1 x Vivapad
- 5 x Skyce, crystal 1.9 mm
- 5 x Skyce, crystal mixed sizes
- various accessories



Refill

- 5 x Skyce dental jewels (1 size)
- available in:

- 1.9 mm, crystal
- 2.4 mm, crystal



These materials have been developed for use in dentistry.
Application should be in accordance with the Instructions for Use. Descriptions and data constitute no warranty of attributes and are not binding.
Printed in Switzerland
© Ivoclar Vivadent AG, Schaan/Liechtenstein.
559694/1007/e/RDV

Production and Distribution:
Ivoclar Vivadent AG
Benderstrasse 2
FL-9494 Schaan
Principality of Liechtenstein
Phone +423 / 235 35 35
Fax +423 / 235 33 60
www.ivoclarvivadent.com

